



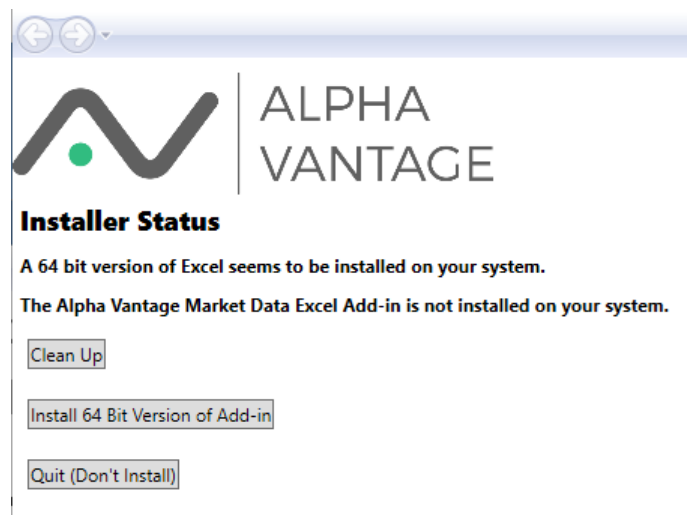
# Install Alpha Vantage Excel Add-in

## Requirements

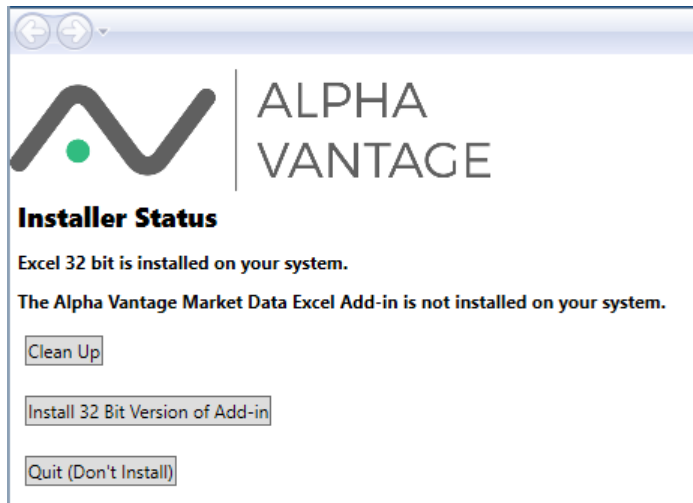
The add-in requires .Net Framework 4.6.2 which should be standard on all recent Windows 10 builds.

The add-in should work with all versions of Excel 2010 or later for both 32-Bit and 64-Bit implementations of MS Office. Not sure what you have? (how to check [here](#)) Don't worry! We have you covered.

Alpha Vantage has put together a single installer program named `AlphaVantageExcelAddinInstaller.exe` that will check your system and install the correct version for you. After starting you'll see something like

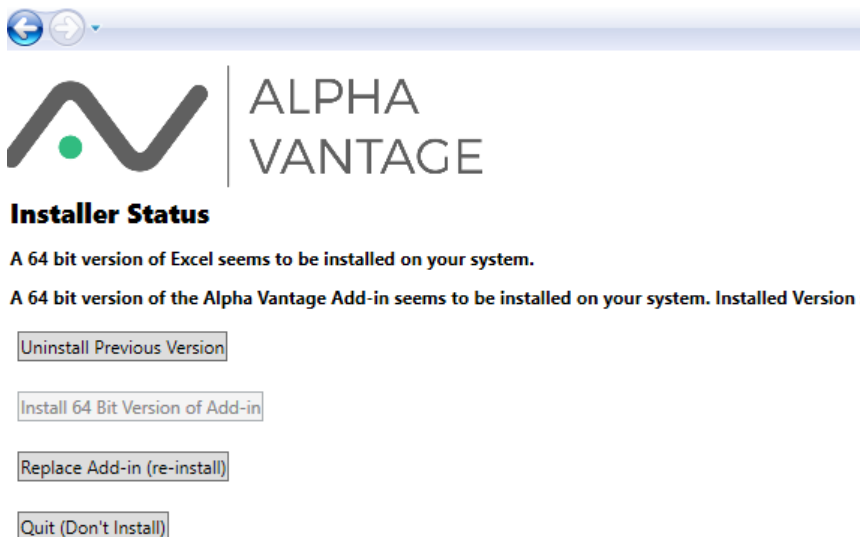


for a 64 Bit Office installation, or



for a 32-Bit Office installation.

If you have the Alpha Vantage Add-in already installed the initial page will look like (for a 64 Bit installation)

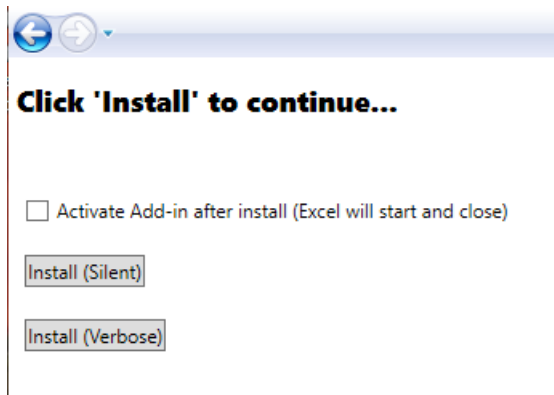


where you now have the option of uninstalling the currently installed Add-in or replacing it with the Add-in supported by the installer.

The “Clean Up” button exists to clean previous installations of the Add-in. Even when the Add-in is uninstalled there are registry entries and data left on your computer. This is so for example you can update the software without re-entering your api key. If you wish to clean all traces of the Alpha Vantage Add-in from your system press this button.

## Installing the Add-in

The installer will show the following screen when initiating the install process

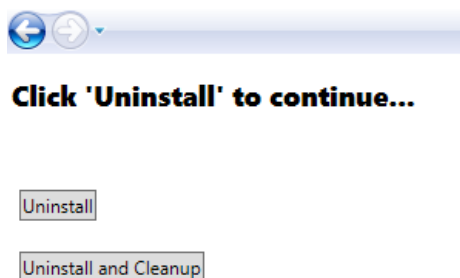


If this is an initial install you will see a checkbox asking if you wish to activate the Add-in after install. This exists because Excel does not automatically enable Add-ins by default (to enable manually [see](#)). If this box is checked the installer will attempt to open Excel, activate the Add-in and then close Excel. If your system is low on resources, it is not recommended that you check this box. If the Add-in is being reinstalled over an older (or same) version the checkbox will not be visible.

The "Install (Silent)" attempts to install the Add-in with a minimum of user input. The "Install (Verbose)" button will enter a sequence of dialogs within the msi installer.

## Uninstalling the Add-in

The Uninstall screen for the installer has 2 options.



The simple “Uninstall” removes the software but leaves registry entries and data on your computer. Use this option if you intend to re-install the Add-in in the future.

The option “Uninstall and Cleanup” attempts to remove all traces of the Add-in from your computer. Be aware that if you use this option you will have to re-enter your api key if you re-install the Add-in.

## A Note About Running Excel Instances

If you attempt certain operations while Excel is running, the Add-in may not be installed or uninstalled properly. In those cases, you will get a screen



### **Instances of Excel are running...**

#### **Can't install Add-in without stopping running Excel instances.**

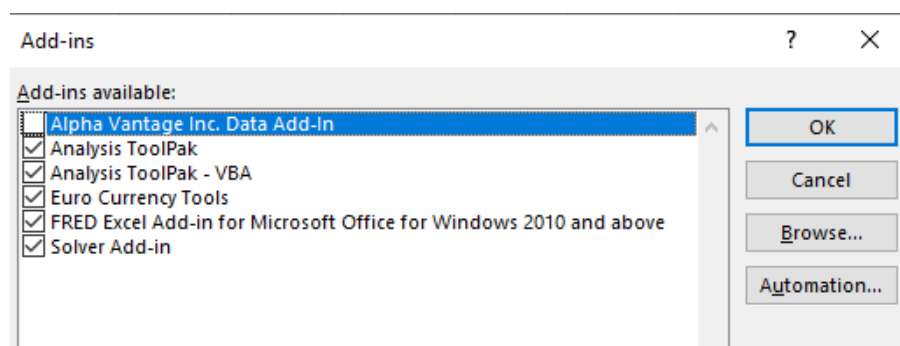
Close the running Excel Instances for me

Go back. I'll try again once I've closed the Excel instances myself

The installer has the capability of closing any open instances of Excel. **SAVE ALL YOUR WORK BEFORE CLICKING TO CLOSE ALL EXCEL INSTANCES!** This is also necessary since Excel sometimes fails to completely shut down and you end up with “zombie” instances of Excel running in the background of your computer. No problem! We’ll take care of the “zombies” for you.

## Enable the Add-in

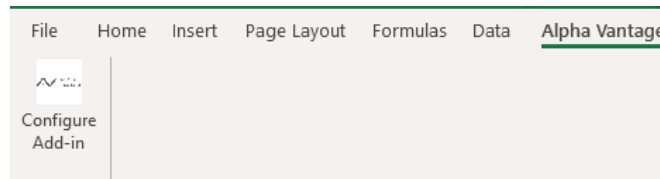
To enable the Add-in manually, open the Add-ins dialog box from within Excel. It should look something like



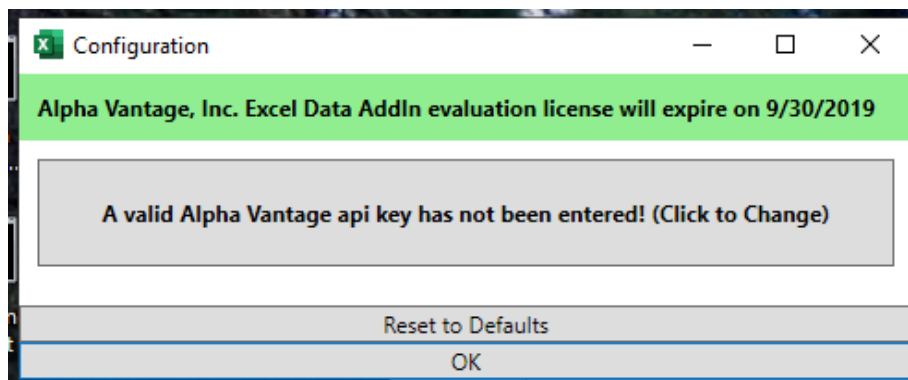
Click the “Alpha Vantage Inc. Data Add-in” and press OK.

## Enter the Api Key

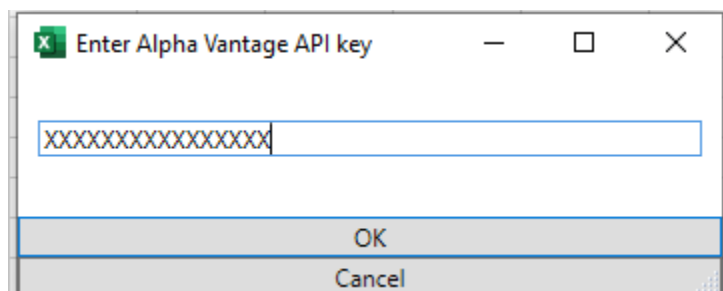
If you have successfully enabled the add-in you should see an “Alpha Vantage” tab in Excel’s ribbon. Click the button named “Configure Add-in.” It should look something like



After clicking Configure you should see



The message on top is the expiration date of the software if it has one. All beta software will have an expiration date. To enter a key press on “A valid Alpha Vantage api key has not been entered!” It should bring up a dialog box where you can enter your key.



Press OK and you should be ready to go! You should see a message on the Configuration dialog that “A valid Alpha Vantage api key has been installed!” After the key has been entered you should also see a Equity Symbol search text box on the Alpha Vantage tab.

Your Add-in is now installed and fully functional!

Additional documentation will be installed in the Documentation folder within the Examples folder. A shortcut should be installed on your desktop named “AlphaVantage Example Spreadsheets.” If for some reason the shortcut is not there the example folder can be found at

`C:\Users\<<your login>\AppData\Local\AlphaVantage\Examples`

Contact us at [spreadheets@alphavantage.co](mailto:spreadheets@alphavantage.co) with any problems or questions.